



PRODUCT CATALOG

**NITECORE**®  
 Image

# CONTENTS

<b>ABOUT NITCORE</b>	<b>2</b>
<b>PRODUCTS AWARDS</b>	<b>4</b>
<b>MEDIA COVERAGE</b>	<b>6</b>
<b>ELECTRONIC CLEANING SOLUTIONS</b>	<b>8</b>
<b>PHOTOGRAPHY FANS</b>	<b>20</b>
<b>CAMERA ACCESSORIES</b>	<b>24</b>
<b>CAMERA BATTERIES AND CHARGERS</b>	<b>26</b>
<b>POWER BANKS</b>	<b>38</b>
<b>CARRY GEAR</b>	<b>47</b>



All images, texts and statements specified herein this catalogue are for reference purpose only. Should any discrepancy occurs between this catalogue and information specified on [www.nitcore.com](http://www.nitcore.com), information on our official website shall prevail. SYSMAX Innovations Co.,Ltd. reserves the rights to interpret and amend the content of this document at any time without prior notice.

# About NITECORE®

Inspired by the notion to "Keep Innovating" with the industry-leading innovative power for 17 years, NITECORE is the first brand to achieve a grand slam milestone in the industries of professional lighting and chargers to receive the German iF Design Award, Red Dot Design Award, the Japanese G-Mark (Good Design) and the American IDEA, as well as Gold Winners of the ISPO Award and Outstanding Outdoor globally recognized in the outdoor industry. We specialize in product lines varying from professional lighting to power solutions, camera cleaning solutions, and carry gear specially designed for law enforcement and military departments, industrial corporations and outdoor enthusiasts worldwide.



The NITECORE photographic product lines consist of camera cleaning solutions, photography fans, USB camera battery chargers, camera batteries, camera lights, cinema lenses and more. From the application of the aerodynamics to the research on the fulcrum location, we are here to challenge the impossible and begin a new era of reinventing the camera cleaning solutions.



# PRODUCT AWARDS



reddot winner 2022

## Electronic Air Blower Solution

BlowerBaby™  
Camera Cleaning Pen



reddot winner 2022

## Camera Sensor Cleaning Solution

Sensor Cleaning Swabs  
+  
Sensor Cleaning Fluid



## SCL10

2-in-1 Smart Camera Light &  
Power Bank

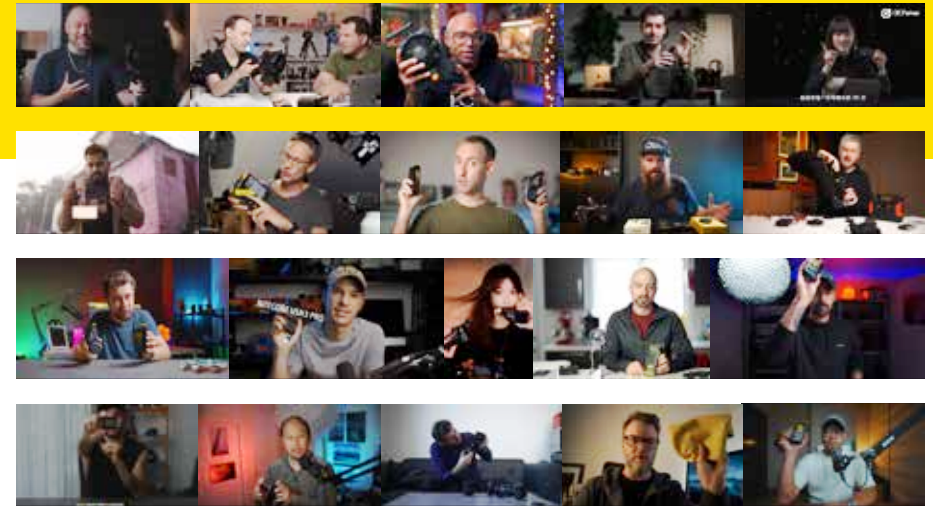


# MEDIA COVERAGE

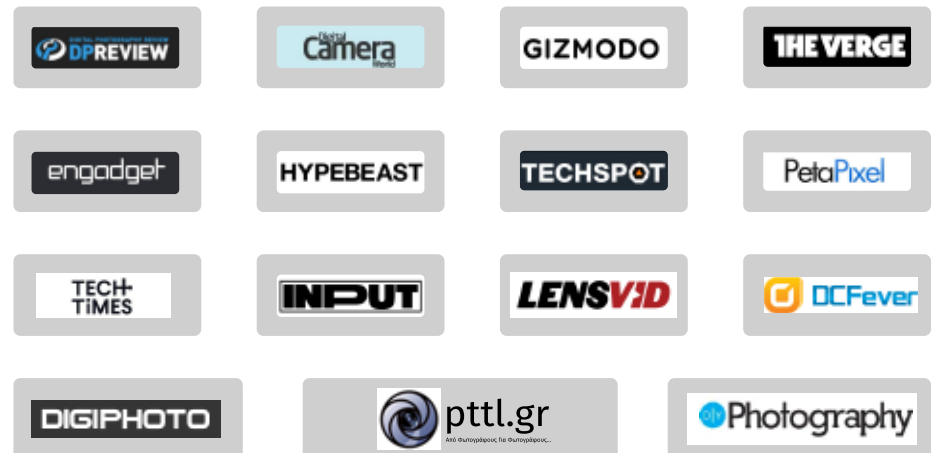
## Magazines



# Professional Photographers



## Media Recognition















# ELECTRONIC CLEANING SOLUTIONS



## BB2 Electronic Photography Blower

Camera Cleaning New Level



-  Max Wind Speed of 80 km/h (49.7 mph)
-  33.6W High Power Motor
-  Magnetic Quick Release Brush
-  7.2Wh Li-ion Battery
-  2.7 kPa Dust Removal Wind Pressure
-  High Density Filter
-  Lighting Function
-  SILENT Mode
-  Mode Dial
-  USB-C Rechargeable

BB2 SPEC	
Input	5V=2A
Rated Power	33.6W
Battery Capacity	7.2Wh
Rotational Speed	30,000 RPM
Wind Speed	TURBO: 80 km/h (49.7 mph)
	OPTICAL: 55 km/h (34.2 mph)
	SILENT: 30 km/h (18.6 mph)



## NIA001 High Density Filter

Compatible with: BB2, BB21



## NIA004 Multipurpose Cleaning Kit

Best Cleaning Partners

Compatible with: BB2, BB21

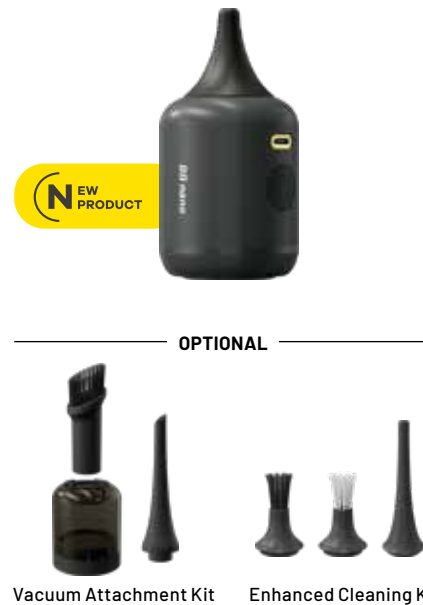


## NIA003 Lens Cleaning Brush

· Ultra Soft · Safe for Lens Coatings

Compatible with: BB2, BB21, BB Mini





## BB nano

### Portable Versatile Electronic Blower

- Max Wind Speed of 40 km/h (24.9 mph)
- 2.6 kPa Dust Removal Wind Pressure
- 4.8Wh Li-ion Battery
- High Density Filter
- Silicone Nozzle Design
- USB-C Rechargeable

BB nano SPEC	
Input	5V-2A
Rated Power	30W
Battery Capacity	4.8Wh
Rotational Speed	40,000 RPM
Wind Speed	HIGH: 40 km/h (24.9 mph) LOW: 15 km/h (9.3 mph)



## BB21

### Electronic Photography Blower

- 80 km/h (49.7 mph) Max Wind Speed
- 7.2Wh Li-ion Battery
- Durable PC Material
- Mode Indicators & Power Indicators
- Lockout Function
- Magnetic Quick Release Brush
- High Density Filter
- USB-C Rechargeable

BB21 SPEC	
Input	5V-2A
Rated Power	33.6W
Battery Capacity	7.2Wh
Rotational Speed	30,000 RPM
Wind Speed	TURBO: 80 km/h (49.7 mph) OPTICAL: 55 km/h (34.2 mph) SILENT: 30 km/h (18.6 mph)



Sakura



Fun Green

## BB Mini

### Unique Cute Design

- Max Wind Speed of 65 km/h (40.4 mph)
- Magnetic Quick Release Brush
- 2 kPa Dust Removal Wind Pressure
- 8.88Wh Li-ion Battery
- High Density Filter
- USB-C Rechargeable

BB Mini SPEC	
Input	5V-2A
Rated Power	25W
Battery Capacity	8.88Wh
Rotational Speed	25,000 RPM
Wind Speed	65 km/h (40.4 mph) (MAX)





# CLEANING SOLUTIONS



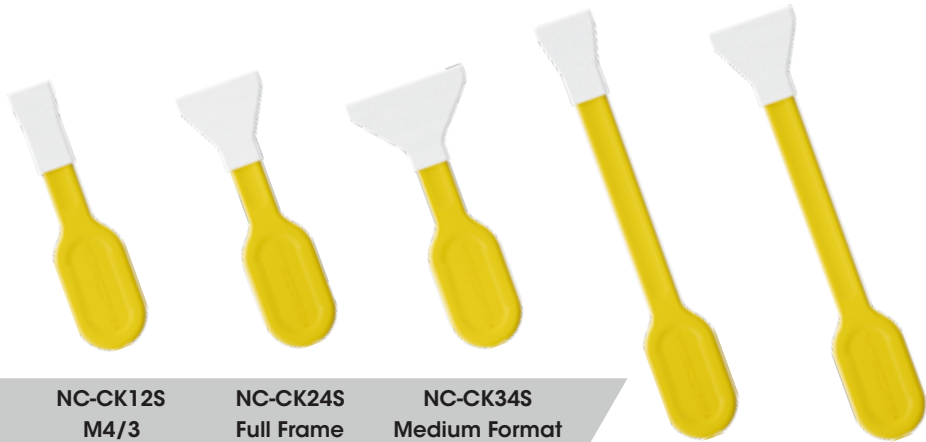
## Sensor Cleaning Swab Series

### Mini Swabs

For Mirrorless Cameras



reddot winner 2022



NC-CK12S  
M4/3

NC-CK24S  
Full Frame

NC-CK34S  
Medium Format

NC-CK16L  
APS-C

NC-CK24L  
Full Frame



Ultra Soft Tongue



Enhanced Thumb Grip



Double Layered Microfiber Design



### Anti-fog Wipes

Model: NC-CK007

- 24h Anti-fog Performance
- Extra Antibacterial Effects
- Antistatic Formula
- Highly Volatile



### Cleaning Wipes

Model: NC-CK008

- Excellent Cleaning Performance
- Highly Volatile
- Mild Formula



### Dust-free Cotton Swabs

Model: NC-CK006

- Vacuum Packing
- Pointed Tip Design
- Sturdy and Lint-free



### Anti-slip Touchscreen Cleaning Gloves

Model: NC-CK009

- Anti-slip Grip Dots
- Effective Touchscreen Capabilities
- Dust-free Individual Vacuum Packing



### Lens Cleaning Pen

Model: NC-CK020

- 18mm Soft Brush
- Curved Carbon Cleaning Tip



### Sensor Cleaning Fluid Pro

Model: NC-CK005



### Carry Case

Model: NC-ACC001



For **BB2 BB21**





**Wedding Planners / Travel Photographers**



**Short Video Creators**



**Film Studio**

# PHOTOGRAPHY FANS



**Gentle Wind**



**Strong Wind**



**Powerful Wind**



**E-commerce Photography Team**



NEW PRODUCT



## CW20

### Portable Cord-Free Photography Fan

- Powered by the Built-in Li-ion Battery
- Max Wind Speed of 155 km/h (96.3 mph)
- Stepless Wind Speed Adjustment
- 1/4" Screw Hole Available
- Full Metal Body

CW20 SPEC	
Input	5V-1A / 9V-2A
Rated Power	100W (MAX)
Rotational Speed	98,000 RPM (MAX)
Wind Speed	155 km/h (96.3 mph) (MAX)



NEW PRODUCT

## CW30

### Portable Cord-Free Photography Fan

- Powered by NP-F Batteries
- Max Wind Speed of 46 km/h (28.6 mph)
- 10 Levels of Wind Speed
- 138 Hours Max Runtime
- Multiple Expansion Interfaces
- Detachable Fan Covers

CW30 SPEC	
Input	DC 12V-16.8V
Rated Power	42W (MAX)
Rotational Speed	7,200 RPM (MAX)
Wind Speed	46 km/h (28.6 mph) (MAX)
Air Volume	400m <sup>3</sup> /h (MAX)

NEW PRODUCT



LED Display

## CW10

### Portable Photography Fan

- NP-F Battery / USB-C Powered
- Max Wind Speed of 50 km/h (31.1 mph)
- 53h 30min Max Runtime
- 1/4" Arri Locating Hole Available
- Hair Tangling Prevention Design (Patent NO.: ZL202321941206.5)

CW10 SPEC	
Battery Powered	6V-8.4V
USB-C Input	5V-1A (Charging) 9V-2A (Operating)
Rated Power	Battery Powered: 32W (MAX) USB-C Input: 18W (MAX)
Rotational Speed	11,000 RPM (MAX)
Wind Speed	50 km/h (31.1 mph) (MAX)
Air Volume	180 m <sup>3</sup> /h (MAX)

\*Battery Not Included

# ACCESSORIES



## Stick-it Wrapper

Model: NC-ACC002



- Multifunctional Organizations
- Scratch Resistant



- Dust and Moisture Proof
- Environmentally Friendly

## Smartphone Cinema Rig

Model: NCR10



- CNC Machining Aluminum Alloy
- Multiple Expansion Interfaces
- Quick Installation & Quick Release



- Vertical / Horizontal
- Multipurpose Phone Mount

TIPA World Awards 2021  
Best Power Accessory

## SCL10 2-in-1 Smart Camera Light & Power Bank



### SCL10 SPEC

Color Temperature	2500K-6300K
Max Brightness Output	800 Lumens
Capacity	10,000mAh 3.85V (38.5Wh)
Input	USB-C: 5V-2.4A / 9V-2A 18W (MAX)
Output	USB-C: 5V-2.4A / 9V-2A / 12V-1.5A
	USB-A: 5V-2.4A / 9V-2A / 12V-1.5A
	18W (MAX)
Dual Ports:	5V-2.4A (MAX)



2500K



4400K



6300K



## LHH82 Lens Heater



### LHH82 SPEC

Input	5V-2A (MAX)
Input Port	USB-C
Operating Temperature	-40°C~40°C (-40°F~104°F)
Heating Temperature	45±5°C (113±9°F)
Compatible with	A filter size of 72-82mm

# CAMERA BATTERIES AND CHARGERS



## UFZ100

### Li-ion Battery Pack for SONY NP-FZ100

- USB-C Rechargeable
- 2,250mAh High Capacity
- Multiple Protection Safeguards



UFZ100 SPEC	
Voltage	7.2V
Capacity	2,250mAh
Energy	16.2Wh

Compatible Models:

SONY a7 III, a7R III, a7R IV, a7S III, a9 (ILCE-9), a9 II, a6600, a7C, a1, FX3, a7 IV

## Media Recognition



### ▶ NP-W235C Battery Pack for FUJIFILM

NP-W235C SPEC	
Voltage	7.2V
Capacity	2,400mAh
Energy	17.28Wh

Compatible Models:

X-T4, GFX-100S, GFX50S II, X-H2S, X-H2, X-T5



### ▶ NP-FZ100C Battery Pack for SONY

NP-FZ100C SPEC	
Voltage	7.2V
Capacity	2,400mAh
Energy	17.28Wh

Compatible Models:

a1, a9, a9II, a7RIII, a7RIV, a7RIII, a6600, a7RII, a7SIII, a7SII, a7C, FX3, a7IV, a7RV, ZV-E1, FX30



Model: NC-BP002

### ▶ NP-FZ100 Battery Pack for SONY

NP-FZ100 SPEC	
Voltage	7.2V
Capacity	2,250mAh
Energy	16.2Wh

Compatible Models:

a1, a7 III, a7R III, a7R IV, a9 (ILCE-9), a9 II, a6600, a7S III, FX3



Model: NC-BP001

### ▶ NP-FW50 Battery Pack for SONY

NP-FW50 SPEC	
Voltage	7.4V
Capacity	1,030mAh
Energy	7.6Wh

Compatible Models:

a5000, a5100, a6000, a6100, a6300, a6400, a6500, a7, a7 II, a7R, a7R II, a7S, a7S II, DSC-RX10 III, DSC-RX10, DSC-RX10 II, DSC-RX10 IV, ILCE-QX1, ILCE-QX1L



Model: NC-BP004

### ▶ NP-W126S Battery Pack for FUJIFILM

NP-W126S SPEC	
Voltage	7.4V
Capacity	1,140mAh
Energy	8.4Wh

Compatible Models:

X-H1, X-Pro3, X-Pro2, X-Pro1, X-T3, X-T2, X-T1, X-T30, X-T20, X-T10, X-T100, X-E3, X-E2S, X-E2, X-E1, X-M1, X-A7, X-A5, X-A3, X-A2, X-A1, X-A10, X100F, X100V, X-S10, X-E4, FinePix HS50EXR / HS30EXR / HS33EXR



Model: NC-BP005

### ▶ LP-E6N Battery Pack for CANON

LP-E6N SPEC	
Voltage	7.2V
Capacity	1,900mAh
Energy	13.6Wh

Compatible Models:

EOS 6D Mark II, EOS 5D Mark IV, EOS 80D, EOS 5DS, EOS 5DS R, EOS 70D, EOS 6D, EOS 5D Mark III, EOS 60D, EOS 7D, EOS 7D Mark II, EOS R, EOS 90D, EOS Ra, EOS R5, EOS R6



Model: NC-BP006

### ▶ EN-EL15b Battery Pack for NIKON

EN-EL15b SPEC	
Voltage	7.2V
Capacity	2,040mAh
Energy	14.6Wh

Compatible Models:

D600, D610, D750, D800, D800E, D810, D810A, D7000, D7100, D7200, 1V1, V1, D500, Z5, Z 6II, Z 7II



### ▶ NP-F970 Battery Pack for SONY

NP-F970 SPEC	
Voltage	7.2V
Capacity	7,800mAh
Energy	56.16Wh

Compatible Models:

NEX-FS700, NEX-FS100J, PXW-Z100, HVR-HD1000E, HDR-AX2000E, NITECORE CW10, NITECORE CW30



### ▶ NP-F750 Battery Pack for SONY

NP-F750 SPEC	
Voltage	7.4V
Capacity	5,200mAh
Energy	38.5Wh

Compatible Models:

NEX-FS700, HXR-NX5N, HXR-NX100, HDR-AX2000E, FDR-AX1, NITECORE CW10, NITECORE CW30



**USB-C** **USB Charger For SONY**

\* SONY is a registered trademark of SONY, INC.

# USN3 PRO

**2 BATTERY SLOTS**

Compatible with SONY's NP-FM500H / NP-F730 / NP-F750 / NP-F770 / NP-F970 / NP-F550

- Input:**  
DC 5V/2A or 9V/2A
- Output Voltage:**  
Slot 1 8.4V±1%  
Slot 2 8.4V±1%
- Output Current:**  
QC Mode: 1200mA\*1 (MAX), 800mA\*2 (MAX)  
Standard Mode: 1000mA\*1 (MAX)

<b>NP-FM500H</b> a99 II a77 II a99 a68	<b>NP-F730</b> CCD-TRV98	<b>NP-F750</b> NEX-FS700 HXR-NX5N HXR-NX100 HDR-AX2000E FDR-AX1	<b>NP-F770</b> HXR-NX3 HXR-NX5	<b>NP-F970</b> NEX-FS700 NEX-FS100J PXW-Z100 HVR-HD1000E HDR-AX2000E	<b>NP-F550</b> UPX-2000 MVC-FD97 MVC-FDR1	Compatible With:
--	-----------------------------	--	--------------------------------------	---	--	------------------



**USB-C** **USB Charger For SONY**

\* SONY is a registered trademark of SONY, INC.

# USN4 PRO

**2 BATTERY SLOTS**

Compatible with SONY's NP-FZ100

- Input:**  
DC 5V/2A or 9V/2A
- Output Voltage:**  
Slot 1 8.4V±1%  
Slot 2 8.4V±1%
- Output Current:**

QC Mode: 1200mA\*1 (MAX), 800mA\*2 (MAX)  
Standard Mode: 1000mA\*1 (MAX)

<b>NP-FZ100</b>	Compatible With:
SONY a1	SONY a7 III
SONY a9 (ILCE-9)	SONY a7R IV
SONY a9 II	SONY a7R III
	SONY a7R III
	SONY a7C
	SONY a6600
	SONY FX3



**USB** **USB Charger For SONY**

\* SONY is a registered trademark of SONY, INC.

# USN2

**2 BATTERY SLOTS**

Compatible with SONY's NP-BX1

- Input:**  
DC 5V/2A
- Output Voltage:**  
Slot 1 4.2V±1%  
Slot 2 4.2V±1%
- Output Current:**  
600mA\*2 (MAX)

<b>NP-BX1</b>	Compatible With:
DSC-HX350	DSC-RX100M4
DSC-H400	DSC-WX500
DSC-HX400	DSC-HX90
DSC-RX100M5	DSC-WX350
DSC-RX1RM2	DSC-HX60
	DSC-RX1R
	(and more compatible models)
DSC-RX100	DSC-RX100M2
DSC-RX100M3	DSC-RX1
DSC-RX1R	
DSC-HX50	HDR-AS50
HDR-AS200V	FDR-X1000V
HDR-A300R	HDR-CX405
HDR-X3000	HDR-PJ410
HDR-MV1	HDR-GWP88E
HDR-CX240E	HDR-PJ240E
HDR-PJ240E	ZV-1

**USB** **USB Charger For SONY**

\* SONY is a registered trademark of SONY, INC.

# USN1

**2 BATTERY SLOTS**

Compatible with SONY's NP-FW50

- Input:**  
DC 5V/2A
- Output Voltage:**  
Slot 1 8.4V±1%  
Slot 2 8.4V±1%
- Output Current:**  
1000mA (MAX)

<b>NP-FW50</b>	Compatible With:
Sony a5000	Sony a6300
Sony a5100	Sony a6400
Sony a6000	Sony a6500
Sony a6100	Sony a7
Sony a7 II	Sony a7R
Sony a7R II	Sony a7S
Sony a7S II	Sony ILCE-QX1
Sony ILCE-QX1L	Sony ZV-E10
Sony DSC-RX10	Sony DSC-RX10 II
Sony DSC-RX10 III	Sony DSC-RX10 IV







**USB Charger For Canon**  
\* Canon is a registered trademark of Canon, INC.

**UCN2 PRO 2 BATTERY SLOTS**

Compatible with CANON's LP-E6N

- Input:**  
DC 5V/2A or 9V/2A
- Output Voltage:**  
Slot 1 8.4V±1%  
Slot 2 8.4V±1%
- Output Current:**  
QC Mode: 1200mA\*1 (MAX), 800mA\*2 (MAX)  
Standard Mode: 1000mA\*1 (MAX)



**USB Charger For Canon**  
\* Canon is a registered trademark of Canon, INC.

**UCN3 2 BATTERY SLOTS**

Compatible with CANON's LP-E6N

- Input:**  
DC 5V/2A
- Output Voltage:**  
Slot 1 8.2V±1%  
Slot 2 8.2V±1%
- Output Current:**  
1000mA (MAX)

**LP-E6N** Compatible With:

- Canon EOS 6D Mark II
- Canon EOS 5D Mark IV
- Canon EOS 80D
- Canon EOS 5DS
- Canon EOS 5DS R
- Canon EOS 70D
- Canon EOS 6D
- Canon EOS 5D Mark III
- Canon EOS 60D

- Canon EOS 90D
- Canon EOS 7D
- Canon EOS 7D Mark II
- Canon EOS R
- Canon EOS Ra
- Canon EOS R5
- Canon EOS R6
- Canon EOS R7

**LP-E6N** Compatible With:

- Canon EOS 6D Mark II
- Canon EOS 5D Mark IV
- Canon EOS 80D
- Canon EOS 5DS
- Canon EOS 5DS R
- Canon EOS 70D
- Canon EOS 6D
- Canon EOS 5D Mark III
- Canon EOS 60D
- Canon EOS 7D
- Canon EOS 7D Mark II
- Canon EOS R
- Canon EOS 90D
- Canon EOS Ra
- Canon EOS R5
- Canon EOS R6



**USB Charger For Canon**  
\* Canon is a registered trademark of Canon, INC.

**UCN5 2 BATTERY SLOTS**

Compatible with CANON's LP-E17

- Input:**  
DC 5V/2A or 9V/2A
- Output Voltage:**  
Slot 1 8.4V±1%  
Slot 2 8.4V±1%
- Output Current:**  
QC Mode:  
750mA\*1 (MAX), 750mA\*2 (MAX)  
Standard Mode:  
750mA\*1 (MAX), 375mA\*2 (MAX)

**LP-E17** Compatible With:

- Canon EOS RP
- Canon EOS 800D
- Canon EOS 760D
- Canon EOS 750D
- Canon EOS 200D
- Canon EOS 200D II

- Canon EOS 77D
- Canon EOS M6
- Canon EOS M6 Mark II
- Canon EOS M5
- Canon EOS M3
- Canon EOS R10



**USB Charger For Canon**  
\* Canon is a registered trademark of Canon, INC.

**UCN1 2 BATTERY SLOTS**

Compatible with CANON's LP-E6/LP-E6N and LP-E8

- Input:**  
DC 5V/2A
- Output Voltage:**  
Slot 1 (LP-E6/LP-E6N) 8.4V  
Slot 2 (LP-E8) 8.4V
- Output Current:**  
1000mA (MAX)

**LP-E6/LP-E6N** Compatible With:

- Canon EOS 5D Mark II
- Canon EOS 5D Mark III
- Canon EOS 5D Mark IV
- Canon XC10
- Canon EOS 5DS
- Canon EOS 5DS R
- Canon EOS 6D
- Canon EOS 7D
- Canon EOS 7D Mark II
- Canon EOS 6D Mark II

- Canon EOS 60D
- Canon EOS 60Da
- Canon EOS 70D
- Canon EOS 80D
- Canon EOS 90D
- Canon EOS R
- Canon EOS Ra
- Canon EOS R5
- Canon EOS R6
- Canon EOS R7
- Canon EOS Rebel T2i
- Canon EOS Rebel T3i
- Canon EOS Rebel T4i
- Canon EOS Rebel T5i
- Canon EOS 550D
- Canon EOS 650D
- Canon EOS 700D
- Canon EOS Kiss X4
- Canon EOS Kiss X5
- Canon EOS Kiss X6

**LP-E8** Compatible With:

- Canon EOS 650D
- Canon EOS 700D
- Canon EOS Kiss X4
- Canon EOS Kiss X5
- Canon EOS Kiss X6



**USB Charger For Nikon**

\* Nikon is a registered trademark of Nikon, INC.

**UNK2 2 BATTERY SLOTS**

Compatible with Nikon's EN-EL15 / EN-EL15a / EN-EL15b

- Input:**  
DC 5V/2A
- Output voltage:**  
Slot 1 8.4V±1%  
Slot 2 8.4V±1%
- Output Current:**  
1000mA (MAX)

**EN-EL15/EN-EL15a/EN-EL15b** Compatible With:

Nikon D500	Nikon D600	Nikon D610	Nikon D750	Nikon D780	Nikon V1	Nikon Z7
Nikon D810	Nikon D810A	Nikon D850	Nikon D7000	Nikon D800	Nikon Z5	Nikon Z6II
Nikon D7200	Nikon D7500	Nikon D800E	Nikon D7100	Nikon 1V1	Nikon Z6	Nikon Z7II



**USB Charger For Nikon**

\* Nikon is a registered trademark of Nikon, INC.

**UNK1 2 BATTERY SLOTS**

Compatible with Nikon's EN-EL14 / EN-EL14a / EN-EL15

- Input:**  
DC 5V/2A
- Output voltage:**  
Slot 1 (EN-EL15) 8.4V±1%  
Slot 2 (EN-EL14/EN-EL14a) 8.4V±1%
- Output Current:**  
1000mA (MAX)



**EN-EL15** Compatible With:

Nikon D600	Nikon D800	Nikon D7000	Nikon V1
Nikon D500	Nikon D800E	Nikon D7100	Nikon Z5
Nikon D610	Nikon D810	Nikon D7200	Nikon Z6II
Nikon D750	Nikon D810A	Nikon 1V1	Nikon Z7II

**EN-EL14a / EN-EL14** Compatible With:

Nikon D5500	Nikon D5100	Nikon D3400	Nikon Coolpix P7700
Nikon D5300	Nikon D3100	Nikon Df	Nikon Coolpix P7800
Nikon D5200	Nikon D3200	Nikon Coolpix P7000	
Nikon D5600	Nikon D3300	Nikon Coolpix P7100	



**USB Charger For Fujifilm**

\* Fujifilm is a registered trademark of Fujifilm, INC.

**FX3 2 BATTERY SLOTS**

Compatible with FUJIFILM's NP-W235

- Input:**  
DC 5V/2A or 9V/2A
- Output voltage:**  
Slot 1 8.4V±1%  
Slot 2 8.4V±1%
- Output Current:**  
QC Mode:  
1,500mA\*1 (MAX), 1,000mA\*2 (MAX)  
Standard Mode:  
1,000mA\*1 (MAX), 500mA\*2 (MAX)



**NP-W235** Compatible With: X-T4, GFX100S



**USB Charger For Fujifilm**  
 \* Fujifilm is a registered trademark of Fujifilm, INC.

**FX1 2 BATTERY SLOTS**

Compatible with FUJIFILM's NP-W126 / NP-W126S

- Input:**  
DC 5V/2A
- Output voltage:**  
Slot 1 8.4V±1%  
Slot 2 8.4V±1%
- Output Current:**  
1000mA (MAX)

**NP-W126/NP-W126S** Compatible With:

- |                 |                |                |               |                 |                |                 |
|-----------------|----------------|----------------|---------------|-----------------|----------------|-----------------|
| Fujifilm X-Pro1 | Fujifilm X-A10 | Fujifilm X-T3  | Fujifilm X-A1 | Fujifilm X-T10  | Fujifilm X100F | FinePix HS50EXR |
| Fujifilm X-Pro2 | Fujifilm X-H1  | Fujifilm X-E1  | Fujifilm X-A2 | Fujifilm X-T20  | Fujifilm X100V |                 |
| Fujifilm X-Pro3 | Fujifilm X-M1  | Fujifilm X-E2  | Fujifilm X-A3 | Fujifilm X-T30  |                | HS30EXR         |
| Fujifilm X-S10  | Fujifilm X-T1  | Fujifilm X-E2S | Fujifilm X-E4 | Fujifilm X-T100 |                | HS33EXR         |
| Fujifilm X-A7   | Fujifilm X-T2  | Fujifilm X-E3  | Fujifilm X-A5 | Fujifilm X-T200 |                |                 |



**USB Charger For Fujifilm**  
 \* Fujifilm is a registered trademark of Fujifilm, INC.

**FX2 PRO 2 BATTERY SLOTS**

Compatible with Fujifilm's NP-T125

- Input:**  
DC 5V/2A or 9V/2A
- Output voltage:**  
Slot 1 12.6V±1%  
Slot 2 12.6V±1%
- Output Current:**  
QC Mode:  
800mA\*1 (MAX), 600mA\*2 (MAX)  
Standard Mode: 500mA\*1 (MAX)

**NP-T125** Compatible With:

- Fujifilm GFX 50S
- Fujifilm GFX 50R
- Fujifilm GFX 100



**USB Charger For Leica**  
 \* Leica is a registered trademark of Leica, INC.

**ULM10 PRO 2 BATTERY SLOTS**

Compatible with Leica's BP-SCL5

- Input:**  
DC 5V/2A or 9V/2A
- Output voltage:**  
Slot 1 8.25V±1%  
Slot 2 8.25V±1%
- Output Current:**  
QC Mode:  
1200mA\*1 (MAX), 800mA\*2 (MAX)  
Standard Mode: 700mA\*1 (MAX)

**BP-SCL5** Compatible With:

- M10
- M10 MONOCHROM
- M10-R

**USB Charger For Leica**  
 \* Leica is a registered trademark of Leica, INC.

**ULSL 1 BATTERY SLOT**

Compatible with Leica's BP-SCL4

- Input:**  
DC 5V/2A
- Output voltage:**  
8.4V±1%
- Output Current:**  
1000mA (MAX)



**BP-SCL4** Compatible With:

- Leica SL Typ601
- Leica SL2
- Leica SL2-S
- Leica Q2
- Leica Q2 Monochrom



## Ci2 Intelligent USB-C Dual-Slot Superb Charger

Ci2 SPEC	
Compatible with	IMR / Li-ion / Ni-MH / Ni-Cd
Input	5V=2A / 9V=2A / 12V=1.5A 18W (MAX)
Output	4.2V±1% / 1.48V±1%
	Fast Charge Mode: 3,000mA*1 (MAX) / 1,500mA*2 (MAX)
	Standard Mode: 2,000mA*1 (MAX) / 1,000mA*2 (MAX)

## Ci4 Intelligent USB-C Four-Slot Superb Charger

Ci4 SPEC	
Compatible with	IMR / Li-ion / Ni-MH / Ni-Cd
Input	5V=2A / 9V=2A / 12V=1.5A 18W (MAX)
Output	4.2V±1% / 1.48V±1%
	Fast Charge Mode: 3,000mA*1 (MAX) / 1,500mA*2 (MAX) / 1,000mA*3 (MAX) / 750mA*4 (MAX)
	Standard Mode: 2,000mA*1 (MAX) / 1,000mA*2 (MAX) / 700mA*3 (MAX) / 500mA*4 (MAX)

### Ci2 & Ci4 Compatible With:

IMR/Li-ion:  
10440, 14500, 14650, 16500, 16340 (RCR123), 16650, 17350, 17500, 17650, 17670, 17700, 18350, 18490, 18500, 18650, 18700, 21700, 22500, 22650, 25500, 26500, 26650, 26700

Ni-MH/Ni-Cd: AA, AAA, AAAA, C, D

## UM2 Intelligent USB Dual-Slot Charger

UM2 SPEC	
Compatible with	IMR / Li-ion / LiFePO4 / Ni-MH / Ni-Cd
Input	DC 5V/2A 9V/2A 18W (MAX)
Output	4.35V±1% / 4.2V±1% / 3.7V±1% / 1.48V±1%
	QC Mode: 1,500mA*2 (MAX)
	Standard Mode: 1,000mA*2 (MAX)

## UMS4 Intelligent USB Four-Slot Charger

UMS4 SPEC	
Compatible with	IMR / Li-ion / LiFePO4 / Ni-MH / Ni-Cd
Input	DC 5V/2A 12V/1.5A 18W (MAX)
Output	4.35V±1% / 4.2V±1% / 3.7V±1% / 1.48V±1%
	QC Mode: 3,000mA*1 (MAX) / 2,000mA*2 (MAX) / 1,000mA*4 (MAX)
	Standard Mode: 2,000mA*1 (MAX) / 1,000mA*2 (MAX) / 500mA*4 (MAX)

### UM2 & UMS4

Compatible With:

IMR/Li-ion/LiFePO4:  
10440, 14500, 14650, 16500, 16340 (RCR123), 16650, 17350, 17500, 17650, 17670, 17700, 18350, 18490, 18500, 18650, 18700, 20700, 21700, 22500, 22650, 25500, 26500, 26650, 26700

Ni-MH/Ni-Cd: AA, AAA, AAAA, C, D



# POWER BANKS



### ▶ NB10000

Ultra Lightweight Carbon Fiber Energy Brick  
Weight: 150g (5.29 oz)

#### NB10000 SPEC

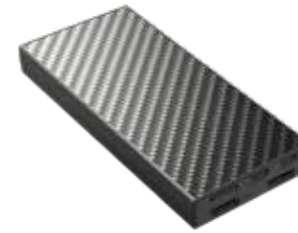
Cell	Li-ion
Capacity	10,000mAh 3.85V (38.5Wh)
Rated Energy	6,400mAh 5V (TYP 1A)
Input	USB-C: 5V=2.4A / 9V=2A
Output	USB-C: 5V=3A / 9V=2.22A / 12V=1.68A USB-A: 5V=3A / 9V=2A / 12V=1.5A Dual Ports: 5V=3A (MAX)

### ▶ NB10000 Silver

Ultra Lightweight Carbon Fiber Energy Brick  
Weight: 150g (5.29 oz)

#### NB10000 Silver SPEC

Cell	Li-ion
Capacity	10,000mAh 3.85V (38.5Wh)
Rated Energy	6,400mAh 5V (TYP 1A)
Input	USB-C: 5V=2.4A / 9V=2A
Output	USB-C: 5V=3A / 9V=2.22A / 12V=1.68A USB-A: 5V=3A / 9V=2A / 12V=1.5A Dual Ports: 5V=3A (MAX)



### ▶ NB20000

Ultra Lightweight Carbon Fiber Energy Brick  
Weight: 324.5g (11.45 oz)

#### NB20000 SPEC

Cell	Li-ion
Capacity	20,000mAh 3.85V (77Wh)
Rated Energy	13,500mAh 5V (TYP 2A)
Input	USB-C (INPUT): 5V=2.4A / 9V=2A / 12V=1.5A USB-C (IN): 5V=2.4A / 9V=3A / 12V=2.5A / 15V=2A / 20V=1.5A
Output	USB-C (OUT1): 5V=2.4A / 9V=3A / 12V=3A / 15V=3A / 20V=2.25A USB-A (OUT2/OUT3): 5V=2.4A / 9V=2A / 12V=1.5A Multi Ports Output: 5V=3A (MAX)

### ▶ NW5000

Carbon Fiber Magnetic Wireless Power Bank

- 120g (4.23 oz)
- Forged Carbon Fiber Shell



#### NW5000 SPEC

Cell	Li-ion
Capacity	5,000mAh 3.85V (19.25Wh)
Rated Energy	3,000mAh 5V (TYP 1A)
Input	USB-C: 5V=2.4A / 9V=2A / 12V=1.5A
Output	USB-C: 5V=2.4A / 9V=2.22A / 12V=1.67A Wireless: 5W / 7.5W / 10W / 15W





### ► SUMMIT 10000

Low Temperature Resistant Carbon Fiber Power Bank

- Low Temperature Heating Mode
- Continuous Use at -40°C (-40°F)

#### SUMMIT 10000 SPEC

Cell	Li-ion
Capacity	10,000mAh 3.85V (38.5Wh)
Rated Energy	6,400mAh 5V (TYP 1A)
Input	USB-C: 5V=2.4A / 9V=2A
Output	USB-C: 5V=3A / 9V=2.22A / 12V=1.68A USB-A: 5V=3A / 9V=2A / 12V=1.5A Dual Ports: 5V=3A (MAX)



### ► SUMMIT 20000

Low Temperature Resistant Carbon Fiber Power Bank

- Low Temperature Heating Mode
- Continuous Use at -40°C (-40°F)

#### SUMMIT 20000 SPEC

Cell	Li-ion
Capacity	20,000mAh 3.85V (77Wh)
Rated Energy	13,500mAh 5V (TYP 2A)
Input	USB-C: 5V=2.4A / 9V=2A
Output	USB-C: 5V=3A / 9V=2.22A / 12V=1.68A USB-A: 5V=3A / 9V=2A / 12V=1.5A Dual Ports: 5V=3A (MAX)



### ► CARBO 10000

Ultra Lightweight Carbon Fiber Power Bank

- 157g (5.54 oz)
- Carbon Fiber Shell

#### CARBO 10000 SPEC

Cell	Li-ion
Capacity	10,000mAh 3.85V (38.5Wh)
Rated Energy	6,400mAh 5V (TYP 1A)
Input	USB-C: 5V=2.4A / 9V=2A
Output	USB-C: 5V=3A / 9V=2.22A / 12V=1.68A USB-A: 5V=3A / 9V=2A / 12V=1.5A Dual Ports: 5V=3A (MAX)



### ► CARBO 20000

World's Lightest 20,000mAh Power Bank

- 295.5g (10.42 oz)
- Carbon Fiber Shell

#### CARBO 20000 SPEC

Cell	Li-ion
Capacity	20,000mAh 3.85V (77Wh)
Rated Energy	13,500mAh 5V (TYP 2A)
Input	USB-C: 5V=2.4A / 9V=2A
Output	USB-C: 5V=3A / 9V=2.22A / 12V=1.68A USB-A: 5V=3A / 9V=2A / 12V=1.5A Dual Ports: 5V=3A (MAX)



### ► NPBI

Waterproof Power Bank



#### NPBI SPEC

Battery Type	21700 Li-ion Battery
Capacity	5,000mAh 3.64V (18.2Wh)
Rated Energy	3,200mAh 5V (TYP 1A)
Input	Micro-USB: 5V=2A
Output	USB-A: 5V=2.4A 9V=2A (18W MAX)
IP Rating	IP68



## 14500/18650/21700 Intelligent Battery System

NITECORE has developed a range of 14500 / 18650 / 21700 batteries, including the HP Series with high discharge capacity, the R Series with direct charging capabilities, the RX Series with USB-C direct / reverse charging, and the i Series with intelligent features. These high-performance lithium batteries offer various options to meet the needs of users, featuring powerful capacity, high energy density, safety, and innovative design.

### ▶ 21700 i Series Battery

- High Energy Density
- 15A/20A Continuous Discharge Current
- Dual Way Output with Positive and Negative Polarities at Both Ends

Model	Specification	Capacity	Discharge Current
NL2150HPi	21700	5000mAh	15A
NL2153HPi	21700	5300mAh	20A



### ▶ Rechargeable Li-ion Batteries

- High Capacity
- High Density
- Multiple Protection Safeguards

Model	Specification	Capacity
NL1823	18650	2300mAh
NL1826	18650	2600mAh
NL1836	18650	3600mAh
NL1834	18650	3400mAh
NL166	16340	650mAh
NL169	16340	950mAh
NL1410	14500	1000mAh
NL2150	21700	5000mAh
NL2153	21700	5300mAh
NL2160	21700	6000mAh





## ► Micro-USB/USB-C Rechargeable Li-ion Batteries

- High Capacity
- High Density
- USB/USB-C Port
- Multiple Protection Safeguards

Model	Specification	Capacity
NL169R	16340	950mAh
NL1826R	18650	2600mAh
NL1834R	18650	3400mAh
NL1836R	18650	3600mAh
NL2150RX	21700	5000mAh



## ► High Performance Batteries

- High Energy Density
- 8A/15A/20A Continuous Discharge Current
- Multiple Protection Safeguards

Model	Specification	Capacity	Discharge Current
NL1836HP	18650	3600mAh	8A
NL1835LTHP	18650	3500mAh	8A
NL2153HP	21700	5300mAh	20A
NL2160HP	21700	6000mAh	20A
NL1835LTHP	18650	3500mAh	8A
NL2142LTHPR	21700	4200mAh	15A



# CARRY GEAR



## ► BP Series

# BP23 Pro

NEW PRODUCT

## Multipurpose Commuting Backpack



500D CORDURA® Nylon Fabric

23L (1,404 cu in) Large Capacity  
With 4 Compartments



3D Carrying System



Internal Fiberglass Stay

# BP23

## Multipurpose Commuting Backpack

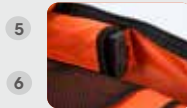
- 23L (1,404 cu in) Large Capacity
- Multiple Compartments
- Wearproof 600D Polyester Fabric



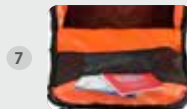
High-visibility Orange Interior Lining  
Multifunctional Main Compartment



Laptop Compartment



Dual Internal Side Pockets



Mesh Zippered Pocket in the Front

# BP18

## Commuter Backpack

- 18L (1,098 cu in) Large Capacity
- 710g (1.6 lbs) Ultra Lightweight

NITECORE X Lii Gear



## ► SLB Series



# SLB05

NEW PRODUCT

## Modular Commuting Sling Bag

NITECORE x OVERCLOCK ROAM

Designed in Collaboration with Han Wang



2L (122 cu in) Large Capacity

# SLB03

## Sling Bag

NITECORE X Lii Gear



# SLB07

## TOTE Bag



## ► Waterproof Dry Bags

# WDB05



# WDB20



Ergonomic Design



Reliable Water Resistance



Secured Fastening System

# NITECORE®



**SYSMAX Innovations Co., Ltd.**

24/F, TCL Plaza, No. 18 Haizhou Road, Haizhu District,  
Guangzhou, 510335, Guangdong, China  
Tel: +86-20-83862000 Fax: +86 20 8388 2723  
E-mail: [info@nitecore.com](mailto:info@nitecore.com)  
[photo.nitecore.com/](http://photo.nitecore.com/)

